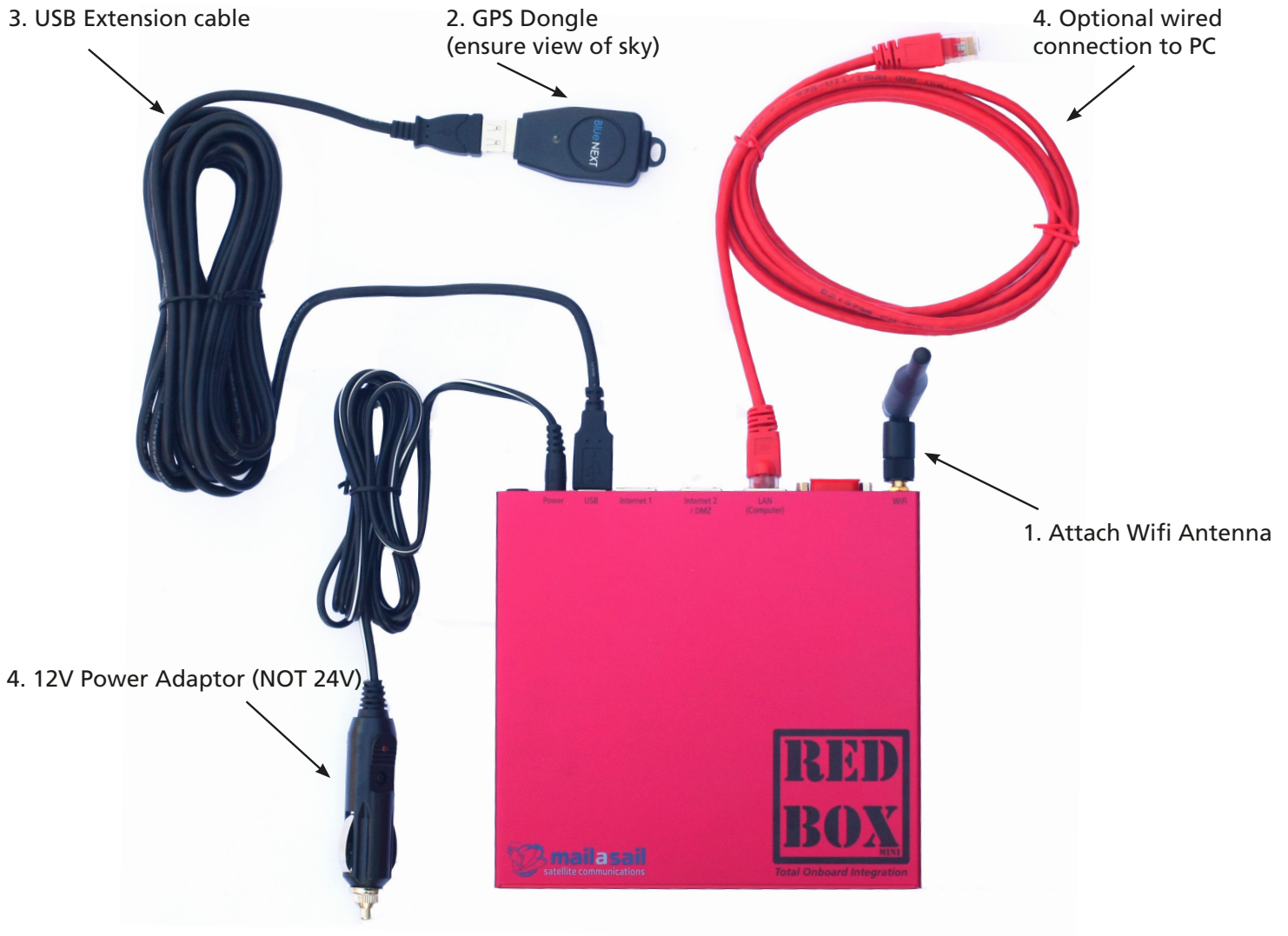


RedBox Quickstart Guide

What's In the Box?



What Else Can I Connect?

Port	Device
USB	3G Cellular Dongle
	Wifi Bat long range wifi booster
	Iridium 9500-9575, 9522P, 9522TP and Sailor SC4000 satellite phones Inmarsat IsatPhone Pro
Internet 1 Internet 2 / DMZ	NMEA 0183 Instruments
	Iridium Pilot (OpenPort)
	Inmarsat FleetBroadband FB150, 250 & 500 VSAT Other ethernet based Internet enabled gateways
LAN (Computer) Wifi	Desktop and laptop computers, phones, tablets and other internet enabled devices

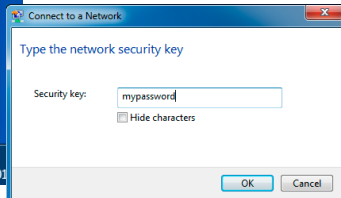
Connect to the RedBox via Wifi



Windows 7 PC

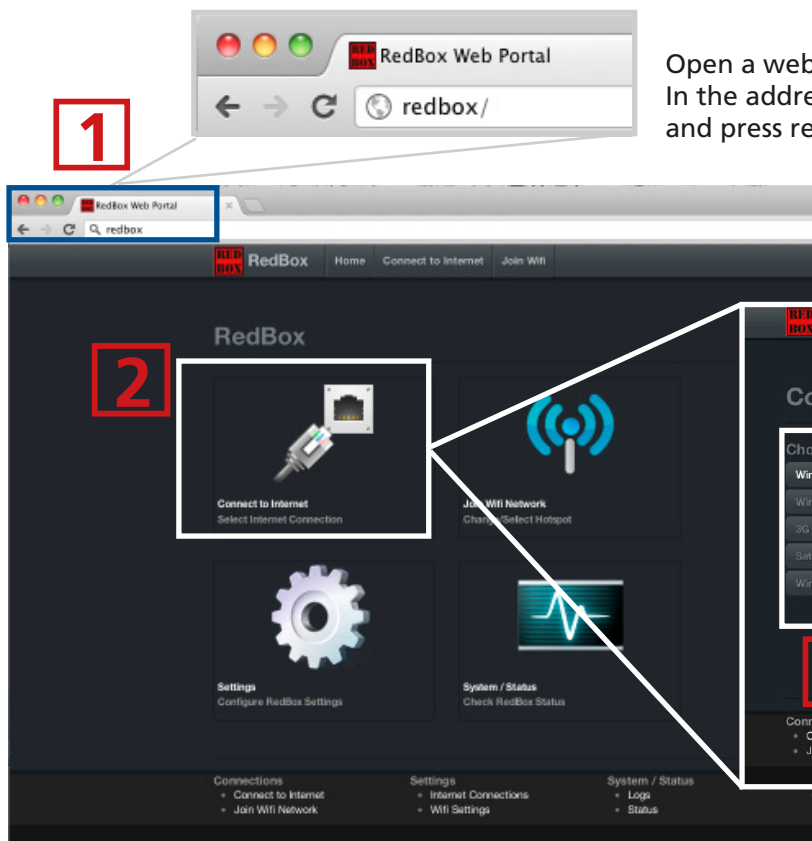
Select the 'RedBox' network from the wireless connections list on your computer

When prompted for the password, enter the 'Default Admin' code (printed on the underside of your RedBox).

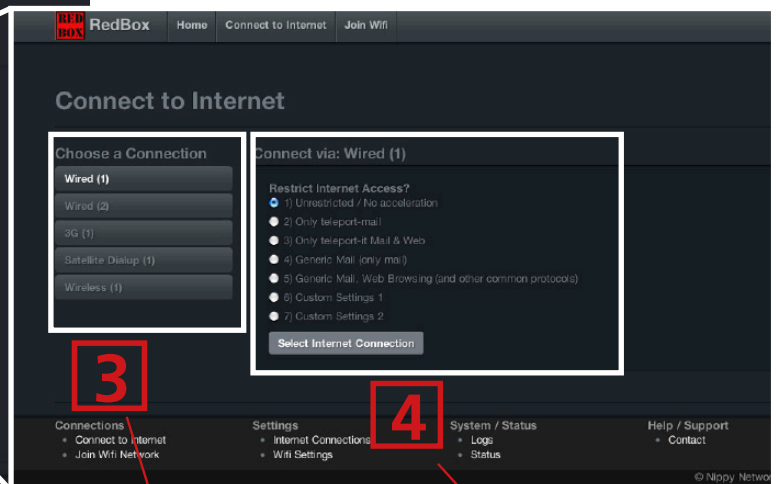


Mac OSX

Open the RedBox Portal



Open a web browser (eg Firefox, Safari, Chrome, Internet Explorer)
In the address bar enter: redbox/ and press return.



Choose Internet connection

Select firewall configuration, then click 'Select Internet Connection'.

Forcing a Dialup Connection to Start

If you are connecting via a satellite dial up connection (Iridium / IsatPhone Pro), you will need to force the satellite phone to initially dial and connect to the Internet. The connection will drop automatically approximately 10 secs after the connection becomes idle. Force the connection to start either by retrieving email from your teleport-mail account, or open the website connect.mailasail.com in your browser.

